

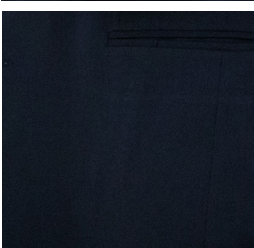
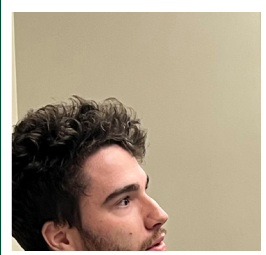



**MICHIGAN STATE**  

---

**UNIVERSITY**

**FOOD INDUSTRY  
MANAGEMENT**



# WHY CHOOSE AFRE AND FOOD INDUSTRY MANAGEMENT?

STARTING SALARY

**\$48-80K**

for most FIM  
graduates

GREATER THAN

**90%**

job placement upon  
graduation


The Food Industry Management major is an economics-based degree focused on food, hunger, and sustainability — but applicable to any industry and field around the world.

The major gives students the flexibility to choose courses related to their individual interests in agri-food systems, marketing, food industry sales or global food security.

Food Industry Management (FIM) is an amazing alternative route to a business career. From the local coffee shop to the state-of-the-art production facility, when the food industry connects with consumers it brings people together. If you see yourself as a **leader, innovator, or entrepreneur** the food industry management major is for you.

The food industry is essential and our graduates are making it better. After graduating, our students rise quickly, taking on management and leadership positions in **innovative companies** both big and small or even creating their own **start-ups**.

We stay connected with you every step of the way. We don't just offer a world class education in **business, finance, economics, and supply chain**; we connect you with our professional and alumni network to help you find a job you'll love.



**“AFRE is home to experts of all things agriculture!  
The department is incredibly passionate about  
the future of agriculture and educating the next  
leaders in ag. Many professors have previous  
industry experience prior to teaching which allows  
them to be able to bring real industry examples into  
the classroom.”**

***-Emily Finkbeiner***

# FOOD INDUSTRY MANAGEMENT

# CURRICULUM REQUIREMENTS

## A. Agribusiness Management Core (38 credits)

AFRE 100	Decision-making in the Agri-Food System	3
AFRE 203	Data Analysis for the Agri-Food System	3
AFRE 206	World Food, Population and Poverty	3
AFRE 210	Professional Seminar	1
AFRE 222	Agribusiness and Food Industry Sales	3
AFRE 240	Food Product Marketing	3
AFRE 265	Ecological Economics	3
AFRE 340	Food Marketing Research and Analytics	1
AFRE 410	Advanced Professional Seminar	1
AFRE 440	Food Marketing Management	3
AFRE 445	Strategic Management for Food and Agribusiness Firms	1
EC 201	Introduction to Microeconomics	3
EC 202	Introduction to Macroeconomics	3
SCM 304	Survey of Supply Chain Management	3

## B. Three of the following courses (9 credits)

AFRE 224	Information and Market Intelligence in the Agri-Food Industry	3
AFRE 232	Commodity Marketing I	3
AFRE 300	Public Policy Issues in the Agri-Food System	3
AFRE 315	Labor and Personnel Management in the Agri-Food System	3
AFRE 322	Organization of the Agri-Food Systems	3
AFRE 327	Global Agri-Food Industries and Markets	3
AFRE 435	Financial Management in the Agri-Food System	3
AFRE 465	Corporate Environmental Management	3
AFRE 490	Independent Study	3
AFRE 493	Professional Internship	3

A study abroad or independent study experience may also fulfill part of this requirement through enrollment in AFRE 490 with approval by the department.

Agricultural Food and Resource Economics 435 or 465 may be used to fulfill requirement "B." if not used to fulfill requirement "C."

## C. One of the following courses (3 credits)

AFRE 435	Financial Management in the Agri-Food System	3
AFRE 465	Corporate Environmental Management	3

## D. One of the following courses (3 credits)

ACC 201	Principles of Financial Accounting	3
ACC 230	Survey of Accounting Concepts	3
AFRE 130	Farm Management I	3
FI 320	Introduction to Finance	3

## E. One of the following courses (3 or 4 credits)

STT 200	Statistical Methods	3
STT 201	Statistical Methods	4
STT 315	Introduction to Probability and Statistics for Business	3

## F. One of the following courses (3 credits)

AFRE 303	Managerial Economics	3
EC 301	Intermediate Microeconomics	3

G. Complete 6 credits in sciences related to food production and processing, as approved by the department. It is recommended that these credits be from the same discipline.



**“Fresh produce and food is a part of our every day lives, Michigan State University’s applied learning experience and strong relationships with employers was key in launching me into the produce industry. The Food industry Management program helped me learn the industry and curriculum at the same time.”**

**-Marcos Diaz, FIM Alumni**

“Don’t be afraid to travel for an internship. My summer spent in St. Louis, Missouri has made a huge impact on my future career and personal goals. Expanding your understanding by taking out of state internships is important in building your skill set.”

-Logan Leen



## CAREER & INTERNSHIP OPPORTUNITIES WITHIN FIM

FIM STUDENTS HAVE BEEN HIRED BY/INTERNEED WITH COMPANIES LIKE:



FIM STUDENTS HAVE BEEN HIRED INTO POSITIONS LIKE:

- Brand Manager
- Data Analyst
- Distribution Manager
- Logistics Manager
- Product Advertising
- Product Marketing
- Retail Store Manager
- Wholesale and Retail Buyer



# READY TO APPLY FOR FOOD INDUSTRY MANAGEMENT?

Ready to become an FIM major or minor? Or still have a few questions? Set up an appointment with our academic advisor, Jenn Petzko at [petzko@msu.edu](mailto:petzko@msu.edu), or our industry relations specialist, Larry Zink at [zink@msu.edu](mailto:zink@msu.edu), and start your time with our department. Follow us on Instagram: @afreadvisor.

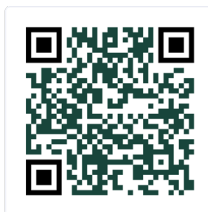
To schedule an advising appointment or to learn more about our program visit [www.canr.msu.edu/afre/undergraduate](http://www.canr.msu.edu/afre/undergraduate)

We have friendly, professional advisors and an industry relations specialist, whose entire role is devoted to finding students opportunities outside of the classroom.

If you are considering a degree at Michigan State University or in the College of Agricultural and Natural Resources, you should consider the Department of Agricultural, Food, and Resource Economics. Apply to major in Food Industry Management today!



Scholarships



Watch



“Learning from world class educators on campus and industry leaders through on-site visits, students gain real world experience that allows them opportunities to immerse themselves in the industry even before graduation.”

-Erin Heckman, FIM Alumni



“My involvement in clubs and student organizations has been the premier highlight of my college experience. My involvement has opened many doors into the professional world.”

-Marley Huijgen



## **DEPARTMENT OF AGRICULTURAL, FOOD, AND RESOURCES ECONOMICS**

The Department of Agricultural, Food, and Resource Economics (AFRE) is one of the preeminent agricultural economics departments in the world. AFRE prepares the next generation of economists and managers to meet the needs of the food, agricultural, and natural resource systems in Michigan and around the world.